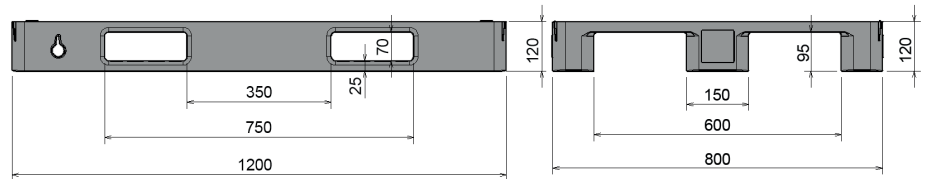







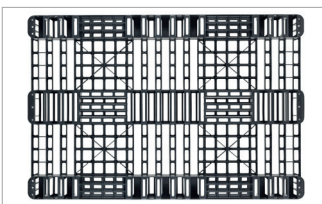
SL1

1200 x 800 mm

Art. no. 83250200



Technical data *1			
Dimensions L x W x H (mm)	1200 x 800 x 120		
Weight (kg)	7.0		
Material*2	HDPE		
Load capacity (kg)*3	 Static 2000	 Dynamic 1000	 In racking system On request
Characteristics		Options	
Colour: black Runners: 3, unwelded Temperature stability: -30 °C to +40 °C, briefly up to +90 °C		Rim options	
Loading quantities (pcs/approx.)			
 Container	On request.		
 Truck	On request.		
Labelling options			
Customised printing and numbering available on request depending on quantity. Position upon consultation.			



^{*1} All technical data include characteristic features, which have been tested under specially defined conditions. Varying data may result from different conditions of usage such as loading method, prevailing temperature and length of storage time. All data and specified information are subject to change without notice. Our service team is pleased to be at your disposal to check the special requirements of your individual application.

^{*2} Our service team is pleased to be at your disposal if you require exact information about material compositions.

^{*3} **Static load:** resistance to pressure on a flat ground surface and an evenly distributed load at a room temperature of approx. 20 °C.

Dynamic load: on a forklift with an evenly distributed load at a room temperature of approx. 20 °C.

In racking system: evenly distributed load (sacks) along the longitudinal sides. Resting on two supports for over 100 h at a room temperature of approx. 20 °C.

Distributor: