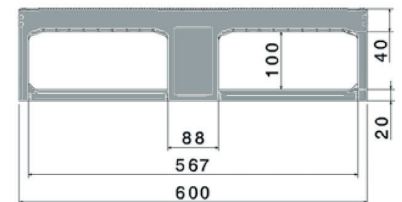
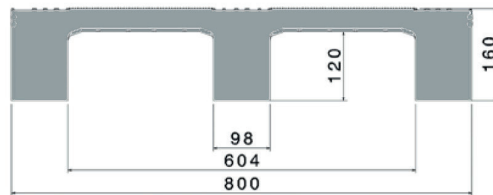







# D2

800 x 600 mm



Art. no. 83512201

### Technical data <sup>\*1</sup>

Dimensions L x W x H (mm)	800 x 600 x 160
Weight (kg)	7.5
Material <sup>*3</sup>	PP, Regranulated material
Load capacity (kg) <sup>*2</sup>	<div style="display: flex; justify-content: space-around; align-items: center;"> <div style="text-align: center;">  <b>Static</b> 2000         </div> <div style="text-align: center;">  <b>Dynamic</b> 500         </div> <div style="text-align: center;">  <b>In racking system</b> —         </div> </div>



### Characteristics

Colour: black  
 Runners: 3, unwelded  
 Rims: 7 mm  
 Temperature stability: -30 °C to +40 °C, briefly up to +90 °C

### Options

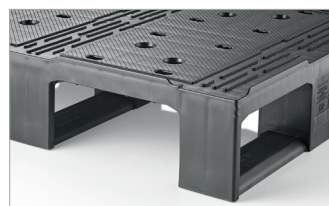
Transponder

### Loading quantities (pcs/approx.)

	<b>Container</b>	Container 20': <b>384</b> Container 40': <b>780</b>	Container 40' High Cube: <b>880</b> Conventional trailer 45' high cube container: <b>1020</b>
		<b>Truck</b>	MEGA-Trailer: <b>1224</b> Jumbo: <b>1368</b>

### Labelling options

Customised printing and numbering available on request depending on quantity. Position upon consultation.



<sup>\*1</sup> All technical data include characteristic features, which have been tested under specially defined conditions. Varying data may result from different conditions of usage such as loading method, prevailing temperature and length of storage time. Our service team is pleased to be at your disposal to check the special requirements of your individual application.

<sup>\*2</sup> **Static load:** resistance to pressure on a flat ground surface and an evenly distributed load at a room temperature of approx. 20 °C.

**Dynamic load:** on a forklift with an evenly distributed load at a room temperature of approx. 20 °C.

**In racking system:** evenly distributed load (sacks) along the longitudinal sides. Resting on two supports for over 100 h at a room temperature of approx. 20°C.

<sup>\*3</sup> Although still within ISO compulsory range, the load-bearing test results using pallets made from regnanulated material show slightly more variation than those from virgin HDPE.

Distributor:

**PÄRLMUTTER LLC**  
 Peterburi tee 34A 11415 Tallinn Estonia

Phone: +372 6030464  
 E-mail: info@parlmutter.com  
 Web page: www.parlmutter.com