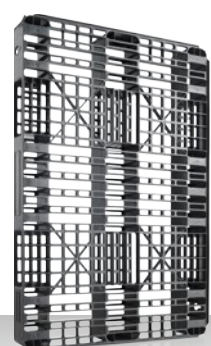


# SL pallet

The robust lightweight

- Made in one piece
- Three runner pallet with low weight
- Building height of only 120 mm



**SL1**  
1200 × 800 × 120 mm



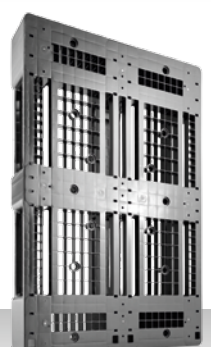
# D pallets

From light weight to heavy duty loads

- Excellent price/performance ratio
- Variety of Options
- D2: a real alternative to the Dusseldorf pallet



**D2**  
800 × 600 × 160 mm



**D1**  
1200 × 800 × 150 mm



**D3/D3-5**  
1200 × 1000 × 150 mm

# Variety in perfection.

Our product highlights  
for efficient pallet logistics!

# CS pallets

Multi-talented across many industries

- Ideal for bagged goods, cardboard packaging and other packed goods
- Combines numerous proven product features
- Variety of equipment options



**CS1**  
1200 × 800 × 150 mm



**CS3**  
1200 × 1000 × 150 mm

# H pallets

A benchmark in hygiene

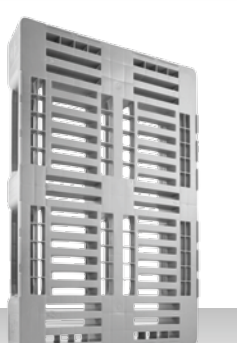
- Europe's No.1 hygiene pallet
- Standard in the meat industry since more than 20 years
- EURO H1: only plastic pallet with comprehensive exchangeability



**H2**  
800 × 600 × 160 mm



**EURO H1**  
With central box retainers  
1200 × 800 × 160 mm



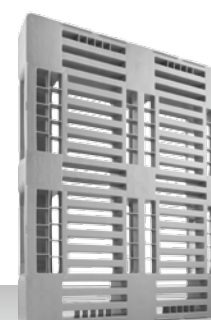
**H1**  
1200 × 800 × 160 mm



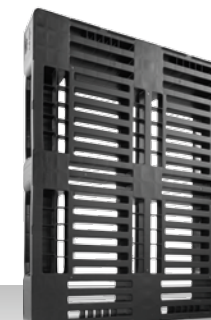
**H1**  
1200 × 800 × 160 mm



**H1**  
1200 × 800 × 160 mm  
(Conductive pallet)



**H3**  
1200 × 1000 × 160 mm



**H3**  
1200 × 1000 × 160 mm

# CR pallets

Maximum performance in premium quality

- Bestselling pallet with RFID technology
- Best quality for complex applications
- Ideally suited for high rack warehouses and automated processes



**CR2**  
800 × 600 × 160 mm



**CR1**  
With metal profiles  
1200 × 800 × 160 mm



**CR1**  
1200 × 800 × 160 mm



**CR1**  
With metal profiles  
1200 × 800 × 160 mm



**CR3/CR3-5**  
With metal profiles  
1200 × 1000 × 160 mm



**CR3-5**  
1200 × 1000 × 160 mm



**CR3/CR3-5**  
1200 × 1000 × 160 mm

# TC pallets

The benchmark in the closed pallet market

- Totally Closed - permanently completely closed for heavy duty applications
- Patented welding geometry
- Heavy duty hygiene pallet
- Compatible with all closed pallets in the market



**TC1**  
1200 × 800 × 160 mm



**TC1**  
1200 × 800 × 160 mm



**TC1**  
1200 × 800 × 160 mm



**TC3/TC3-5**  
1200 × 1000 × 160 mm

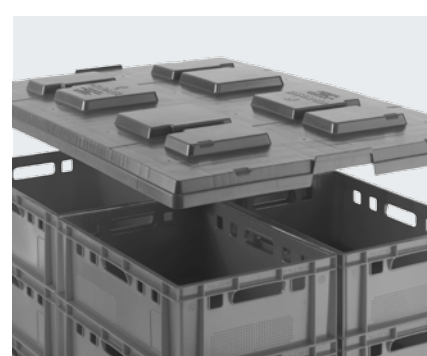


**TC3/TC3-5**  
1200 × 1000 × 160 mm



**TC3/TC3-5**  
1200 × 1000 × 160 mm

## Your advantages with Craemer:



**Pallet lids for all Euro and Industrial pallets**



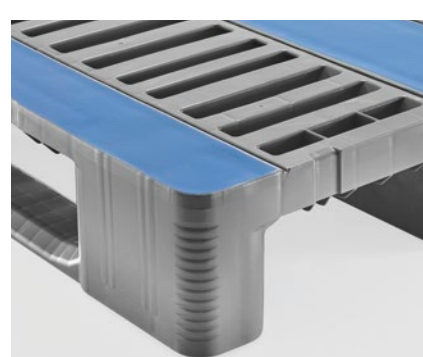
**Corrosion-protected reinforcement profiles**



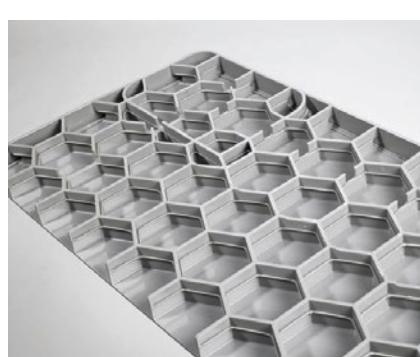
**Welded runners for conveyor technology**



**Numerous rim options**



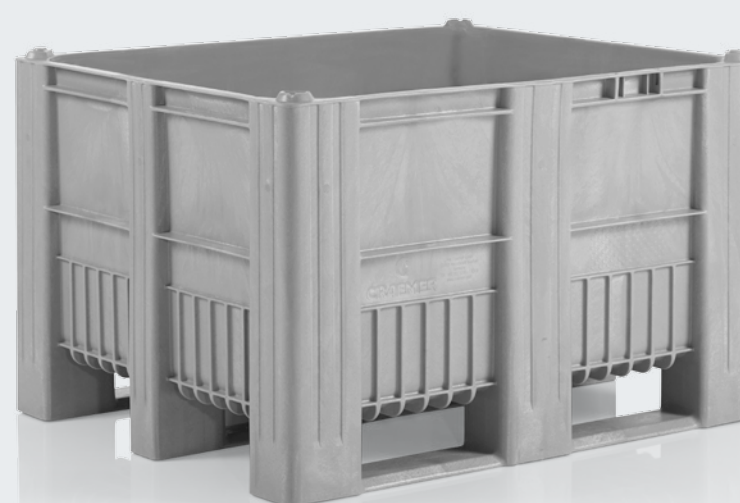
**Non abrasive anti-slip coating**



**High strength honeycomb structure**

## New to the range

# Pallet Box CB3



### Key facts:

- Design: One-piece injection moulded, 3 runners
- Material: HDPE, food grade
- Dimensions: 1200 × 1000 × 740 mm (L × W × H, exterior)
- Weight: 36,5 kg
- Volume: 610 l
- Available in various colours
- Personalisation options

**Do you have questions or require further information?**  
The Craemer sales team is happy to advise you.

Quality – the best value.

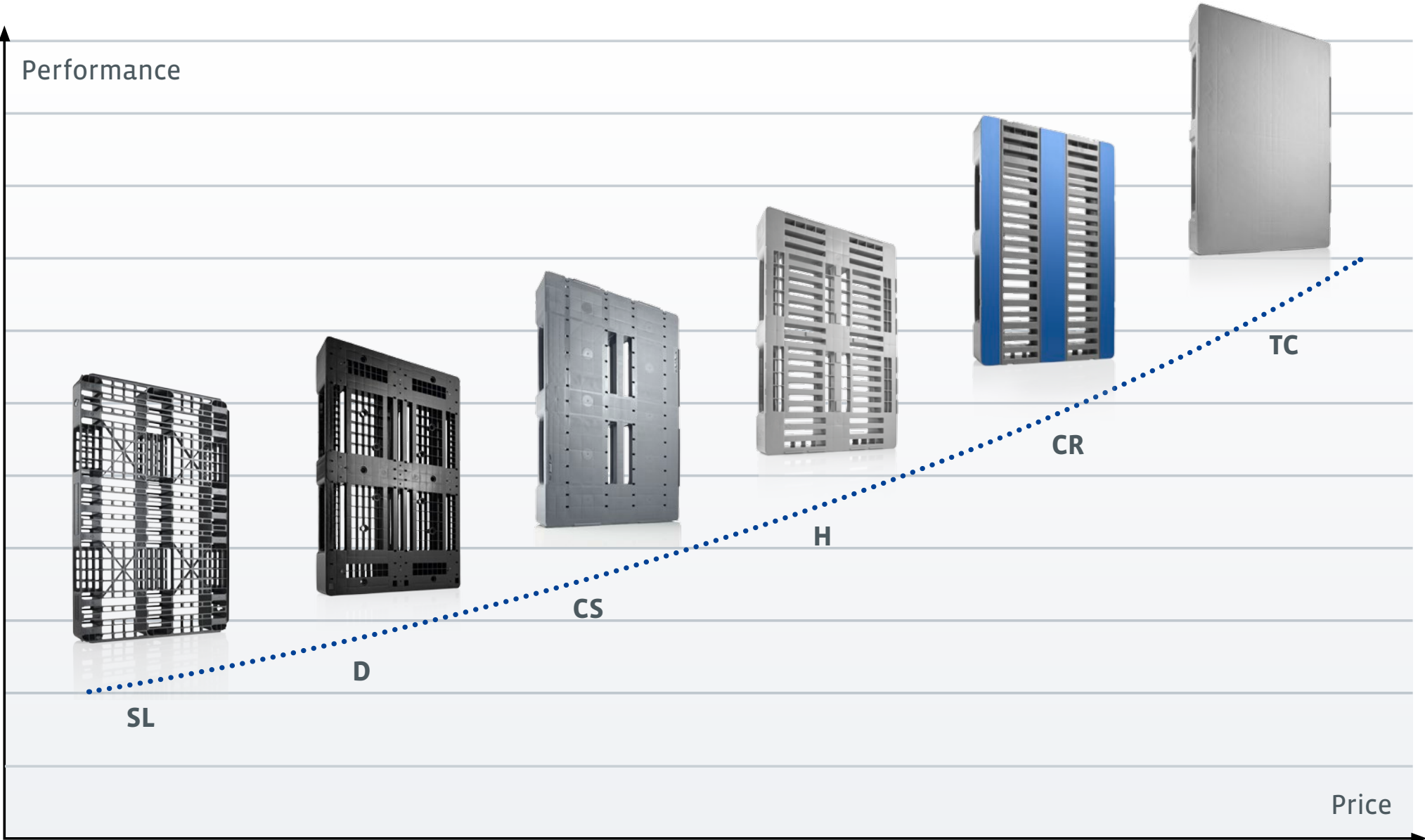
[www.craemer.com](http://www.craemer.com)



# The Craemer pallet range price-performance comparison

The more complex the application, the higher the performance requirements for load carriers. Various characteristics of Craemer plastic pallets facilitate this allegedly “simple” and often underestimated product to run smoothly and reliably in a variety of application areas.

## The right plastic pallet for your logistics processes



The price-performance comparison is valid for euro and industrial size pallets in the respective basic version and can vary depending on the application.

Distributor:

**PÄRLMUTTER LLC**  
Peterburi tee 34A 11415 Tallinn Estonia

Phone: +372 6030464  
E-mail: info@parlmutter.com  
Web page: www.parlmutter.com

Optimise your pallet logistics with Craemer.  
Customised and industry perfect solutions.  
Profit from our comprehensive know-how –  
trust the quality leader.

