



Tubs

Double-walled insulated tubs

Borgarplast produces two types of tubs and eleven sizes. The types are high-insulated (PUR insulated) and heavy-duty (PE insulated) tubs. Tubs are manufactured from Polyethylene (PE), which is approved for use in the food industry by the US FDA and DA, DE BGA, and EU authorities and individual EU countries. Their surface is smooth and easy to clean, to meet the most stringent demands for hygiene. Borgarplast tubs offer strength and durability far in excess of that of injection-moulded tubs and their average service life in Icelandic fishing and fish processing is 4-5 years. All tubs are available with insulated lids and have either two or four 2" drainage holes.

Insulation is either Polyurethane (PUR) or PE foam. High-insulated tubs are preferable where a high degree of insulation is needed. Heavy-duty tubs are recyclable and more suitable for applications that require high strength and carrying capacity, but only offer one-third of the insulation of high-insulated tubs. Recyclable tubs (heavy-duty) are much heavier than high-insulated tubs, and therefore more expensive.

All Borgarplast tubs stand on only two supports, which together with other preventive action will reduce the need for maintenance. A major buyer of tubs from two manufacturers reports that only 30% of his Borgarplast tubs require maintenance and repair, compared with 70% of other types during the same period. Assuming this applies everywhere, it doesn't take long before the price of tubs from other manufacturers has doubled.

Tubs are typically cleaned using water at a temperature of 70-80°C and a nozzle pressure of less than 200 bars. Dedicated tub washing machines are also available and generally clean tubs much better than manual methods.

It is not advisable to freeze fluids in a tub since expansion during freezing can puncture the tub's inner wall. Synthetic tubs should be treated with care in freezer stores. Heavy-duty (PE-insulated) tubs can withstand steady hot fluid at a temperature of up to 70-80°C. Fluids should not be kept in PUR-insulated tubs (high-insulated) at temperatures above 35-40°C on account of the risk of damage to the bonding between the PE and PUR.

When fully loaded tubs are stacked, their condition should always be borne in mind. Stacking tubs several layers high will gradually damage them.



TUBS



CUSTOM
MOULDING



PALLETS



BUOYS AND
FENDERS



LONG LINE
BINS



POLYSTYRENE
BOXES



WELLS



SEPTIC TANKS
OIL & GREASE
SEPARATORS



POLYSTYRENE
INSULATION

**ISO
14001**

**Environmental
Management
System**
since 1999



Registered Quality System
since 1993

BORGARPLAST

www.borgarplast.com

1971 **30** 2001
years

High-insulated tubs

PUR insulated

Technical specifications

Size	Capacity litres	Length mm	Width mm	Height mm	Weight kg	Tub order no.	Lid order no.
300	260	910	710	680	26	20156	20178
350	330	920	760	730	29	20157	20183
450	430	1170	800	690	35	20158	20182
460	430	1220	1030	580	41	20159	20186
660	630	1220	1030	750	51	20163	20186
1000	960	1500	1200	890	86	20170	20184
1010	930	1470	1170	880	86	20173	20193

The above specifications refer to external measurements. The manufacturer reserves the right to a $\pm 1\%$ deviation in size, weight and capacity ($\pm 3\%$ for sizes 1000 and 1010).



300



350



450



460



660



1000



1010

Size 300:

This tub is used especially on board smaller boats, for fresh fish on ice. It is also used for pickling and in the meat industry for storage of chilled foods and is very convenient where space is restricted. The tub can be moved by a standard hand pallet jack from all four sides and it can also be rotated 180° with a fork lift truck. Size 300 tubs filled with water can be stacked up to four high.

Size 350:

Same application as size 300, with the same lift access.

Size 450:

Euro-standard size compatible with the international ISO 6780 standard, for maximum space usage in DC and HC containers. Lift access is the same as for sizes 300 and 350. The tub can be stacked with size 450, type heavy-duty, and offers the highest level of breaking strain and insulation in the Borgarplast high-insulated range.

Size 460:

Size 460 is increasingly popular among quality food producers because of its shallow design, which reduces pressure on the contents. Stackable with sizes 460, heavy-duty type, and 660. Accessible by hand pallet jack from two sides and by fork lift truck from all four. Can be rotated 180° by fork lift truck.

Size 660:

The most popular of all Borgarplast tubs. It measures 150 mm deeper than size 460 but has the same properties and fields of application. Stackable with sizes 660, heavy-duty type, and 460, with the same lift access as size 460.

Size 1000:

Used extensively in saltfish processing, transportation of fish, salmon harvesting, shrimp curing and elsewhere. Lift access as for sizes 460, 660 and 1010. Stackable with size 1010.

Size 1010:

Adaptation of size 1000 to DC and HC container specifications. Its modified design enables 20% more tubs of size 1010 to be stored in the container, resulting in substantial savings on transportation costs, in particular to distant markets. Same lift access as for sizes 460, 660 and 1000. Stackable with size 1000.

The next generation of insulated tubs

High-insulated tubs designed to meet the ISO 6780 transportation standard.

Technical specifications

Size	Capacity litres	Length mm	Width mm	Height mm	Weight kg	Tub order no.	Lid order no.
400	400	1200	1000	570	41	20240	20188
600	600	1200	1000	750	51	20260	20188
700	700	1200	1000	860	55	20270	20188

The above specifications refer to external measurements. The manufacturer reserves the right to a $\pm 1\%$ deviation in size, weight and capacity.

Size 400:

Meets the ISO 6780 transportation standard, which can mean 20% better utilization during transport and correspondingly lower operating costs. Accessible by hand jack and lift truck from all four sides and can be rotated 180° by fork lift truck. Stackable with sizes 400, heavy-duty type, 600, 660 and 700.

Size 600:

Same basic specifications and properties as size 400, high-insulated. Stackable with sizes 600, heavy-duty type, 400 and 700.

Size 700:

Same basic specifications and properties as high-insulated tubs sizes 400 and 600. Stackable with sizes 700, heavy-duty, 400 and 600.



400



600



700



1400

Size 1400: A tuna tub

Technical specifications

Size	Capacity litres	Length mm	Width mm	Height mm	Weight kg	Tub order no.	Lid order no.
1400	1250	1990	1170	880	120	20176	20196

The above specifications refer to external measurements. The manufacturer reserves the right to a $\pm 2\%$ deviation in size, weight and capacity.

This tub is new on the market and is specially intended for the storage of large fish, such as tuna and swordfish. It is also well suited for many kinds of fish processing, such as salting and marinating.

The tub is insulated with polyurethane, a material with a high degree of insulation, and is thus a good choice for the storage of fish in ice or liquid ice in order to maintain its initial quality and thus maximize its value.

The tub has a smooth surface, inside and out, and is easy to clean. It is also well suited for the processing and/or storage of various other types of food, such as meat. An insulated lid to fit the tub is available.

Recyclable heavy-duty tubs

PE insulated

Technical specifications

Size	Capacity litres	Length mm	Width mm	Height mm	Weight kg	Tub order no.	Lid order no.
450	430	1170	800	690	48	20558	20182
460	430	1220	1030	580	51	20559	20186
660	630	1220	1030	750	65	20563	20186



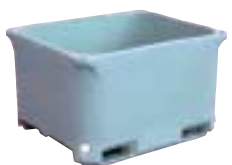
The above specifications refer to external measurements. The manufacturer reserves the right to a $\pm 1\%$ deviation in size, weight and capacity.



450



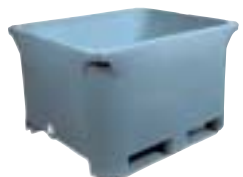
460



660



400



600



700

Size 450:

Identical to size 450, high-insulated, except that it is insulated with expanded PE instead of PUR, making it completely solid and also recyclable. Stackable with size 450, high-insulated.

Size 460:

Identical to size 460, high-insulated, but PE-insulated, completely solid and also recyclable. Stackable with sizes 460, high-insulated, and 660.

Size 660:

Identical to size 660, high-insulated, but PE-insulated, completely solid and also recyclable. Stackable with sizes 660, high-insulated, and 460.

The next generation of insulated tubs

Heavy-duty tubs designed to meet the ISO 6780 transportation standard

Technical specifications

Size	Capacity litres	Length mm	Width mm	Height mm	Weight kg	Tub order no.	Lid order no.
400	400	1200	1000	570	51	20658	20188
600	600	1200	1000	750	65	20676	20188
700	700	1200	1000	860	70	20687	20188



The above specifications refer to external measurements. The manufacturer reserves the right to a $\pm 1\%$ deviation in size, weight and capacity.

Size 400:

Identical to size 400, high-insulated, except that it is insulated with expanded PE instead of PUR, making it completely solid and also recyclable. Stackable with sizes 400, high-insulated, 600 and 700.

Size 600:

Same basic specifications and properties as sizes 600, high-insulated, 400 and 700.

Size 700:

Same basic specifications and properties as sizes 700, high-insulated, 400 and 600.

BORGARPLAST HF.

Sefgardar 1-3a • IS 170 Seltjarnarnes • Iceland
Tel: + 354 561 2211 • Fax: + 354 561 4185
borgarplast@borgarplast.com • www.borgarplast.com