



BORGARPLAST

Product catalog

26.10.2018

Distributor:

PÄRLMUTTER LLC

info@parlmutter.com
www.parlmutter.com

Table of Contents

Plastic Europallets

Plastic Europallet with raised top face / 10100	3
Plastic Europallet with internal rim / 10100KE	4
Plastic Europallet external rim / 10100K	5

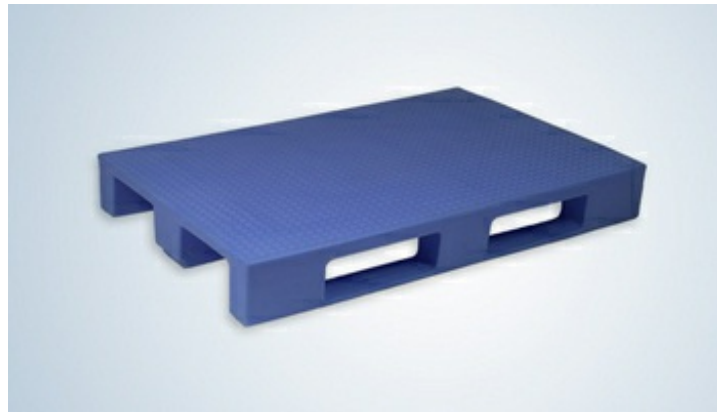
Plastic Industrial Pallets

Plastic Industrial Pallet with internal rim / 10105KI	6
Plastic Industrial Pallet with external rim / 10105K	7
Plastic Industrial pallet with raised top face / 10105	8

Plastic Box Pallets

Plastic Box pallet / 10103	9
----------------------------	---

Plastic Europallet with raised top face / 10100



Product description

Plastic Europallet, un-rimmed, with raised ribbed surface (non-skid).

This product conforms to the ISO 6780 transportation system standards. The capacity of the standard pallets (based on equal distribution of load) is 1.000 kg on a smooth plain. If the pallets are rested on their ends, for example between shelves, their capacity is reduced to 300 kg. Pallets with higher load capacity can be ordered and manufactured according to customer's specifications. It is easy to repair pallets using superheated air (250°C) and Polyethylene welding rod.



Size and measurements

External Length (mm)	External Width (mm)	External Height (mm)	Weight (kg)
1200	800	150	17

Plastic Europallet with internal rim / 10100KE



Product description

Plastic Europallet, moulded with a 22 mm internal rim and smooth surface. Drainage slits on the corners prevent water from accumulating on the surface.

This product conforms to the ISO 6780 transportation system standards. The capacity of the standard pallets (based on equal distribution of load) is 1.000 kg on a smooth plain. If the pallets are rested on their ends, for example between shelves, their capacity is reduced to 300 kg. Pallets with higher load capacity can be ordered and manufactured according to customer's specifications. It is easy to repair pallets using superheated air (250°C) and Polyethylene welding rod.



Size and measurements

External Length (mm)	External Width (mm)	External Height (mm)	Surface length inside rims (mm)	Surface width inside rims (mm)	Weight (kg)
1200	800	150	1170	770	18

Plastic Europallet external rim / 10100K



Product description

Plastic Europallet moulded with a 22 mm external rim and smooth surface. Drainage slits on the corners prevent water from accumulating on the surface.

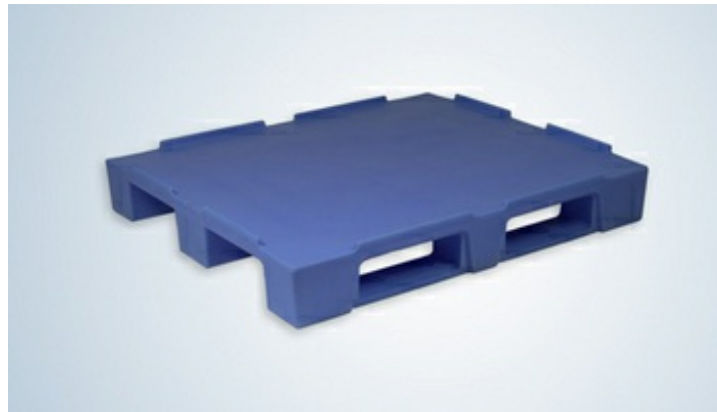
This product conforms to the ISO 6780 transportation system standards. The capacity of the standard pallets (based on equal distribution of load) is 1.000 kg on a smooth plain. If the pallets are rested on their ends, for example between shelves, their capacity is reduced to 300 kg. Pallets with higher load capacity can be ordered and manufactured according to customer's specifications. It is easy to repair pallets using superheated air (250°C) and Polyethylene welding rod.



Size and measurements

External Length (mm)	External Width (mm)	External Height (mm)	Surface length inside rims (mm)	Surface width inside rims (mm)	Weight (kg)
1230	830	150	1200	800	18

Plastic Industrial Pallet with internal rim / 10105KI



Product description

Plastic Industrial Pallet, moulded with a 22 mm internal rim and smooth surface. Drainage slits on the corners prevent water from accumulating on the surface.

This product conforms to the ISO 6780 transportation system standards. The capacity of the standard pallets (based on equal distribution of load) is 1.000 kg on a smooth plain. If the pallets are rested on their ends, for example between shelves, their capacity is reduced to 300 kg. Pallets with higher load capacity can be ordered and manufactured according to customer's specifications. It is easy to repair pallets using superheated air (250°C) and Polyethylene welding rod.



Size and measurements

External Length (mm)	External Width (mm)	External Height (mm)	Surface length inside rims (mm)	Surface width inside rims (mm)	Weight (kg)
1200	1000	160	1170	970	23

Plastic Industrial Pallet with external rim / 10105K



Product description

Plastic Industrial Pallet, moulded with a 22 mm external rim and smooth surface. Drainage slits on the corners prevent water from accumulating on the surface.

This product conforms to the ISO 6780 transportation system standards. The capacity of the standard pallets (based on equal distribution of load) is 1.000 kg on a smooth plain. If the pallets are rested on their ends, for example between shelves, their capacity is reduced to 300 kg. Pallets with higher load capacity can be ordered and manufactured according to customer's specifications. It is easy to repair pallets using superheated air (250°C) and Polyethylene welding rod.



Size and measurements

External Length (mm)	External Width (mm)	External Height (mm)	Surface length inside rims (mm)	Surface width inside rims (mm)	Weight (kg)
1230	1030	160	1200	1000	23

Plastic Industrial pallet with raised top face / 10105



Product description

Plastic Industrial Pallet, un-rimmed, with raised ribbed surface (non-skid).

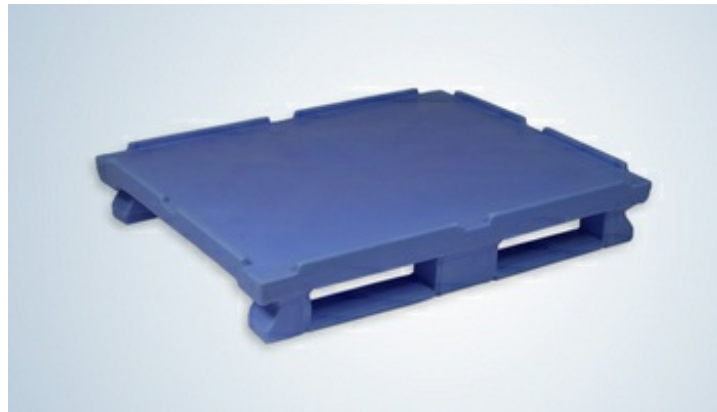
This product conforms to the ISO 6780 transportation system standards. The capacity of the standard pallets (based on equal distribution of load) is 1.000 kg on a smooth plain. If the pallets are rested on their ends, for example between shelves, their capacity is reduced to 300 kg. Pallets with higher load capacity can be ordered and manufactured according to customer's specifications. It is easy to repair pallets using superheated air (250°C) and Polyethylene welding rod.



Size and measurements

External Length (mm)	External Width (mm)	External Height (mm)	Weight (kg)
1200	1000	160	22

Plastic Box pallet / 10103



Product description

Plastic Box pallet, moulded with a 22 mm internal rim, drainage slits on the corners and the middle of the sides to prevent water from accumulating on the surface. The Box pallet can be lifted with straps.



Size and measurements

External Length (mm)	External Width (mm)	External Height (mm)	Surface length inside rims (mm)	Surface width inside rims (mm)	Weight (kg)
1090	890	160	1060	860	18